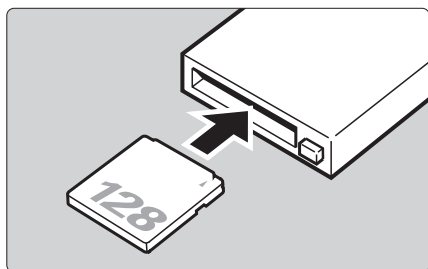


EOS-1Ds Mark II Firmware Updating Instructions

Firmware updates are coded instructions that can be written into the program memory chips of the camera itself. These updates are normally limited in scope, and improve or correct how the camera performs certain functions. The firmware in the EOS-1Ds Mark II controls picture-taking and image processing.

The following instructions are based on the condition that the latest version of updated firmware has been downloaded to your computer. A card reader capable of writing data to a memory card is also required. We recommend formatting the memory card in the camera prior to starting this procedure. Please use a memory card with capacity greater than 8MB.

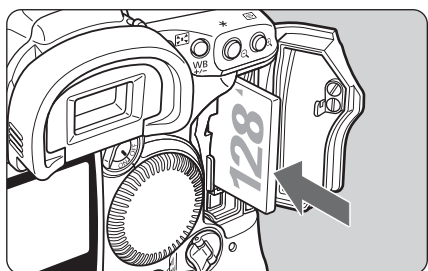


1 Insert the memory card into the card reader.

- Before inserting the memory card, be sure that the card reader is usable.
- You can either use a CF card or a SD memory card.

2 Copy the firmware to the memory card.

- Copy the firmware "1Ds2xxxx.BIN" in the computer on the memory card. (xxxx is the version number.)
- Place the firmware file in the root directory of the memory card. If the firmware file is placed in a subfolder of the memory card, the EOS-1Ds Mark II will not see it.



3 Insert the memory card containing the firmware into the camera.

- Close the memory card slot cover, and turn the power switch <ON>.



- Use DC coupler DCK-E1 or a fully-charged NP-E3 battery to power the camera while updating the firmware.
- If the EOS-1Ds Mark II power supply fails during the firmware updating procedure, the camera might not be able to take pictures until it is repaired by an authorized Canon Factory Service Center. In this case, please contact the authorized Canon Factory Service Center in your country or region for further assistance.



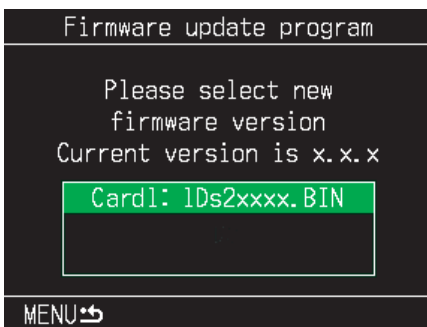
4 On the menu, select "Firmware."

- ① Press the <MENU> button.
- ② While pressing the <MENU> button, turn the < ⌚ > dial to select < F12 >.
- ③ While pressing the <SELECT> button, turn the < ⌚ > dial to select "Firmware." Then let go of the <SELECT> button.



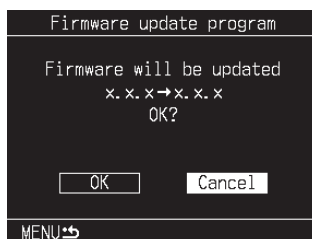
5 Select "OK."

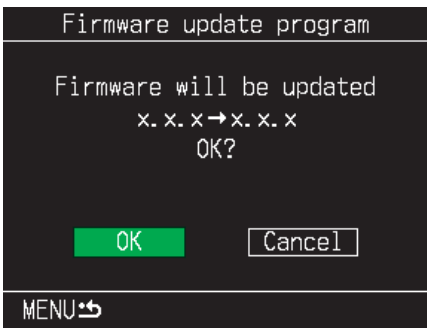
- While pressing the <SELECT> button, turn the < ⌚ > dial to select "OK." Then let go of the <SELECT> button.
- ▶ The firmware update program is displayed.



6 Select the "Firmware."

- While pressing the <SELECT> button, turn the < ⌚ > dial to select "Firmware." Then let go of the <SELECT> button.
- ▶ The firmware update is displayed to check.

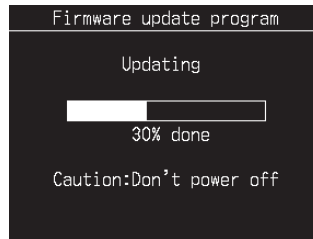




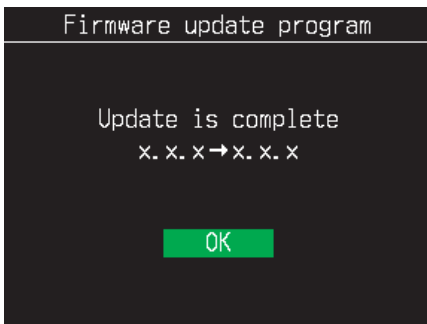
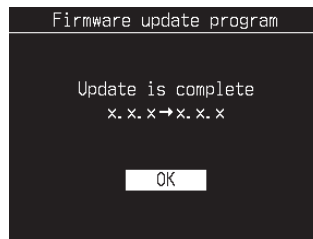
7 Start updating.

- While pressing the <SELECT> button, turn the <◉> dial to select "OK." Then let go of the <SELECT> button.
- ▶ Update starts.
- Never touch any buttons on the camera until updating is finished.
- If a problem occurs after updating starts, refer to the instructions on page 4 of this document.

Updating



Updated

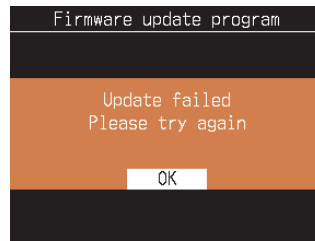


8 Finish updating.

- Press the <SELECT> button.
- ▶ Updating completed and the camera is ready to shoot.

When an error message appears just after updating starts:

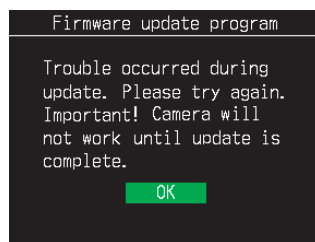
- ① Press the <SELECT> button.



- If the LCD monitor turns off, download the firmware again, and start the process from Step 1 on the first page.
- If the LCD monitor changes as shown below, go to the Step ② below.



- ② Press the <SELECT> button.



- ③ Repeat the same procedures starting with the instructions "6."



When the problem remains unsolved if the above procedures are taken, try the procedures as below:

- ① Turn the power switch to <OFF>.
- ② Download the firmware again and extract it. Copy the extracted firmware "1Ds2xxxx.BIN" to the root directory of the memory card again.
- ③ Insert the memory card into the camera and turn the power switch <ON>, then the screen shown in Step 6 on the second page is displayed..
- ④ Repeat the procedures starting with Step "6."
- ⑤ If the firmware updating procedure cannot be completed successfully after following these steps, the camera will not be able to take pictures until it is repaired by an authorized Canon Factory Service Center. In this case, please contact the authorized Canon Factory Service Center in your country or region for further assistance.